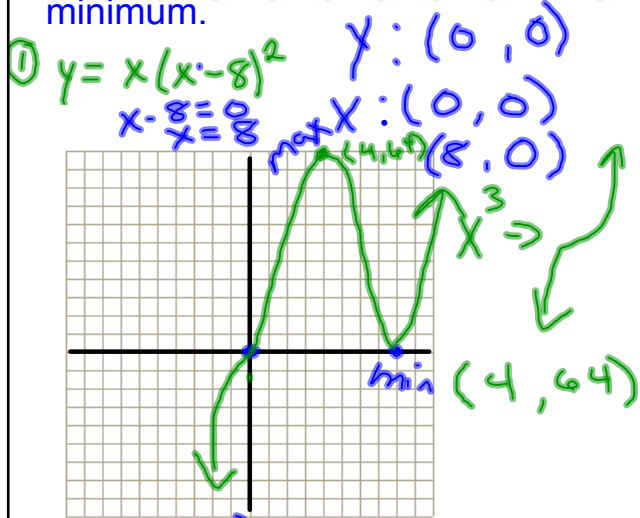
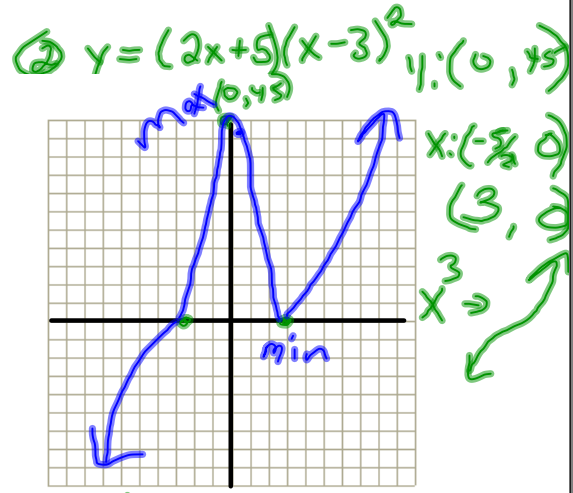


6.2 more

Graph the following: label x and y intercepts and local maximum and minimum.



$x(x-8)(x-8)$   
 $x^3 - 16x^2 + 64x$

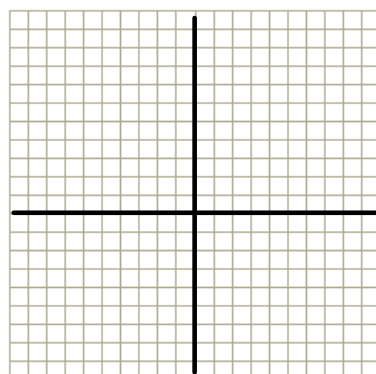
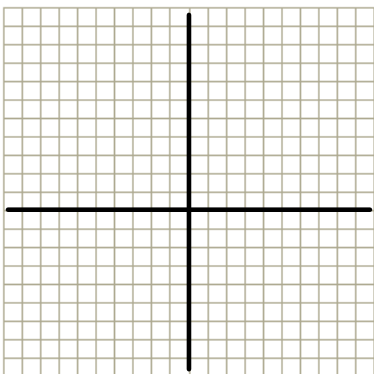


$-5/2, 3, 3$  zeros  
 $(.25, 41.59)$

Jan 5-9:08 PM

⑤  $y = 2x^3 + 10x^2 + 12x$   
 $2x(x^2 + 5x + 6)$

⑥  $y = x^4 - x^3 - 6x^2$



Jan 5-9:13 PM